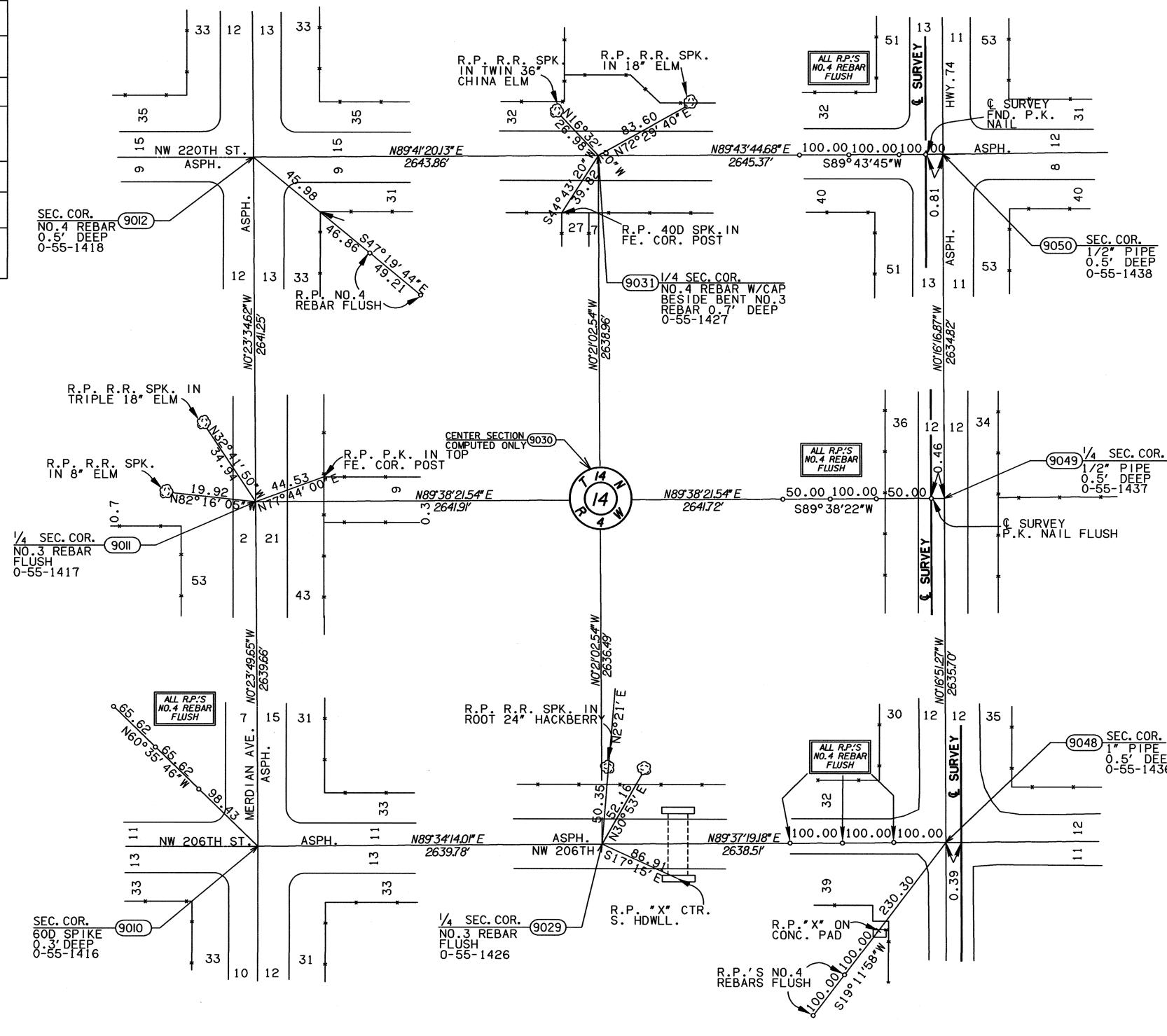
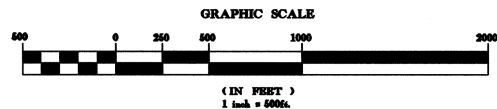


- LAND CORNER HISTORY NOTES -

9010	FND. 60D SPK. 0.3 FEET DEEP FILED BY LESLIE JUDD JR. P.L.S. NO. 40 AUGUST 1, 1983 & BRYAN COON P.L.S. NO. 1276 NOVEMBER 24, 1992. CHECKED & USED MONUMENT FND. ON THIS SURVEY.
9011	FND. NO.3 REBAR FLUSH FILED BY LESLIE JUDD JR. P.L.S. NO. 40 AUGUST 1, 1983. CHECKED & USED MONUMENT FND. ON THIS SURVEY.
9012	FND. NO.4 REBAR 0.5 FEET DEEP WHICH FITS REFERENCES ON C.C.R. FILED BY BRYAN COON P.L.S. 1276 NOVEMBER 24, 1992. CHECKED & USED MONUMENT FND. ON THIS SURVEY.
9029	FND. NO.3 REBAR FLUSH SET BY LESLIE JUDD JR. P.L.S. NO. 40 AUGUST 1, 1983. CHECKED & USED MONUMENT FND. ON THIS SURVEY.
9031	FND. BENT NO.3 REBAR 0.7 FEET DEEP SET BY LESLIE JUDD JR. P.L.S. NO. 40. DROVE NO.4 REBAR WITH YELLOW PLASTIC CAP STAMPED "GUNNING SURVEYING" FLUSH WITH ASPHALT SURFACE BESIDE MONUMENT FND. CHECKED & USED POSITION ON MONUMENT FND. ON THIS SURVEY.
9048	FND. 1" PIPE 0.5 FEET DEEP FILED BY BRYAN COON P.L.S. 1276 OCTOBER 3, 1995. CHECKED & USED MONUMENT FND. ON THIS SURVEY.
9049	FND. 1/2" PIPE 0.5 FEET DEEP SET BY UNKNOWN PARTIES WHICH FITS S.W.O. 2374(6) FIELD NOTES. CHECKED & USED MONUMENT FND. ON THIS SURVEY.
9050	FND. 1/2" PIPE 0.5 FEET DEEP SET BY UNKNOWN PARTIES WHICH FITS REFERENCES ON C.C.R. FILED BY CURTIS HALE P.L.S. 1084 DECEMBER 26, 1996. MONUMENT FND. FITS S.W.O. 2374(6) CHECKED & USED MONUMENT FND. ON THIS SURVEY.

Angle Of Variance
At Pt. No. 9030
X= 2089294.6769
Y= 251218.2739
Lat.= 34°01'22.50"
Long.= 97°36'22.50"
= 00°13'33.2"



EW-91

EW-91.5

EW-92

NS-303

NS-303.5

NS-304

OKLAHOMA DEPARTMENT OF TRANSPORTATION					
FED. ROAD DIST. NO.	STATE	PROJ. NO.	FISCAL YEAR	SHEET NO.	TOTAL SHEETS
6	OKLA.				
DESCRIPTION		REVISIONS		DATE	

HAROLD GUNNING SURVEYING		CORDELL, OKLAHOMA 73632	
1108 EAST MAIN C.A. NO. 2248		EXPIRATION DATE: 6-30-2005	
PLS	GHG	OKLAHOMA DEPARTMENT OF TRANSPORTATION SURVEY DIVISION	
DRAWN	TRK	SURVEY DATA SHEET	
CHECKED		SHEET 39 OF 43	
APPROVED			
CREW		SWO 3868 (1) PROJECT NO. 14964(08) SHEET NO. S22	